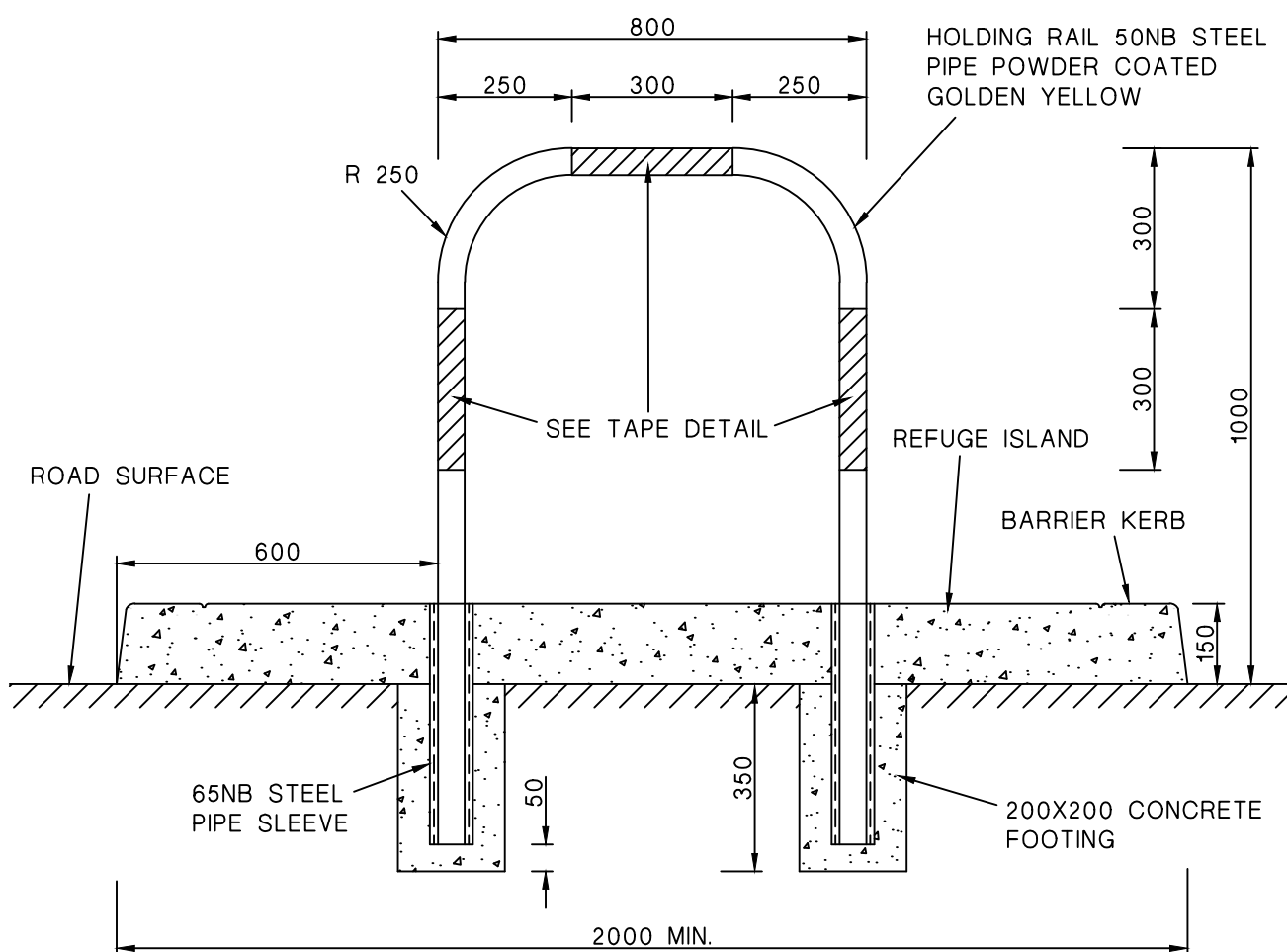


TAPE DETAIL


NOTES

1. HOLDING RAIL MAY BE INCREASED UP TO A MAX. OF 1500mm LONG FOR A WIDER REFUGE. CENTRALLY FIX REFLECTIVE TAPE BAND ON TOP OF ALL HOLDING RAILS. FOR RAIL WIDTHS ≥ 1050 mm, USE TWO 250mm WIDE RED TAPE BANDS.
2. DO NOT USE ANY INFILL WITHIN THE HOLDING RAIL OPENING.
3. USE METAL WEDGE TO SECURE HOLDING RAIL IN STEEL PIPE SLEEVE.
4. ALL DIMENSIONS ARE IN MILLIMETERS.



HOLDING RAIL DETAIL

NOT TO SCALE

	THE HILLS SHIRE COUNCIL	DATE: JULY. 2011
	HOLDING RAIL	DRAWING No.: SD.28